

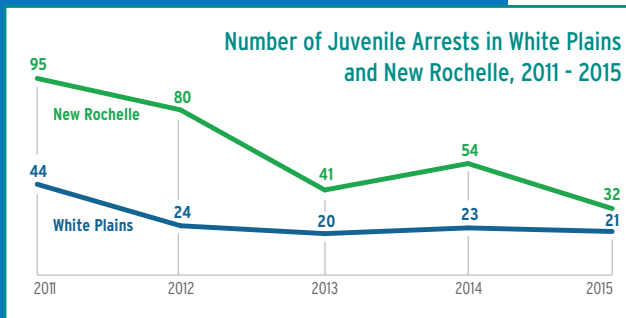
PEEKSKILL

Peekskill City School District has eliminated the stigma for its low-income students by offering free meals to all students. It is the first district to do so in all of its schools. In the first full month of the program (October 2016), they saw breakfast participation increase by 648 meals in comparison to last year. In addition, they are also making the effort to create each meal from scratch enabling them to provide healthier options for students.

Wilson, Colleen. "Peekskill schools: Free food for all." *Lohud.com, The Journal News*, 9 Dec. 2016, <http://www.lohud.com/story/news/education/2016/12/09/peekskill-schools-free-food-all/94754514/>. Accessed 3 Apr. 2017. Food Research and Action Center, Community Eligibility Database, <http://frac.org/community-eligibility-database/>

WHITE PLAINS & NEW ROCHELLE

In both the City of White Plains and the City of New Rochelle, we have seen a steep drop in the number of juvenile arrests (children under the age of 16) from 2011 to 2015. In White Plains, the number of juvenile arrests in 2015 was 21, a 52% drop from 2011. And New Rochelle has seen a 66% decline since 2011 with only 32 juvenile arrests in 2015.



New York State Division of Criminal Justice Services, Juvenile Arrests/Criminal Activity: 2011-2015, <http://www.criminaljustice.ny.gov>

YONKERS

Between the years 2014 and 2016, the Yonkers School District High School Graduation Rate increased at a faster pace than either Westchester or New York State. It jumped nine percentage points, from 69% in 2014, to 78% in 2016. In comparison, Westchester increased by two percentage points (85% to 87%), and New York State increased by three percentage points (76% to 79%) in the same time period.

New York State Department of Education <http://data.nysed.gov>

MOUNT VERNON

According to Principal Jamal Doggett, at Rebecca Turner Elementary School, a positive school climate brings double rewards. Not only did suspension numbers decline overall, but Grade 3 ELA proficiency rates jumped by 36 percentage points from 2015 to 2016. A switch to tiered instruction has also played a major role in overall academic improvement.

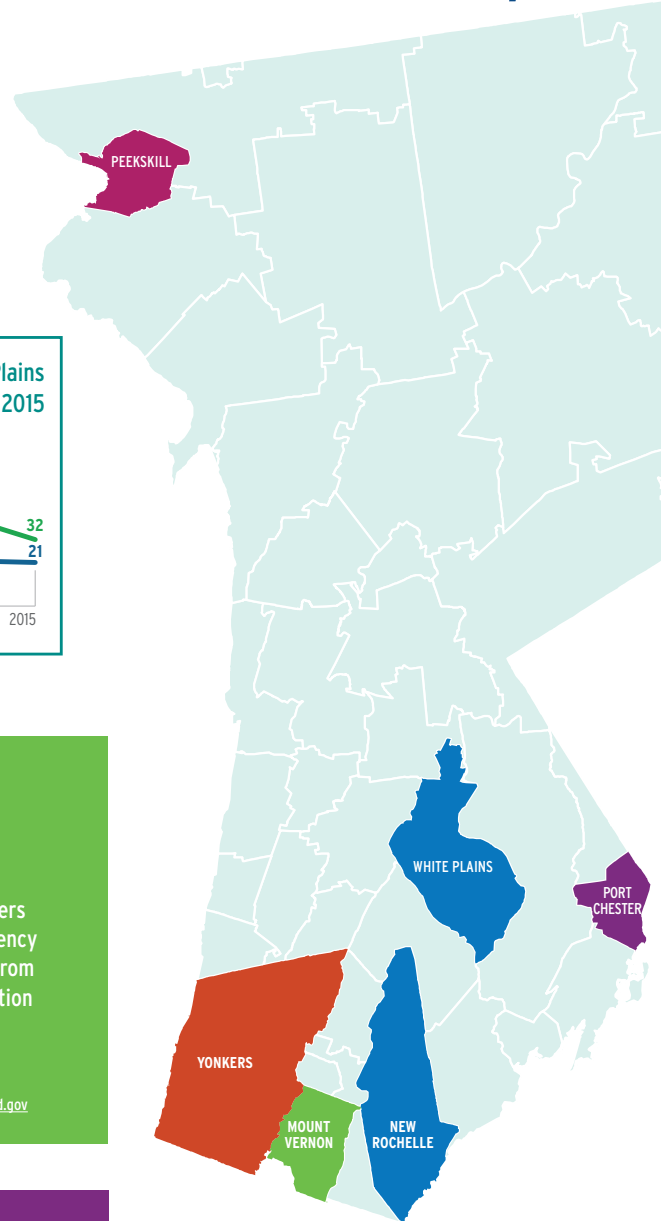
New York State Department of Education, <http://data.nysed.gov>

PORT CHESTER

Port Chester has seen low asthma-related emergency room visits for children between 0-17 years of age. Between 2012-2014, the rate of asthma-related ER visits in Port Chester was only 26.8 per 10,000, whereas in Westchester County we saw a rate of 101.8 per 10,000.

New York State Department of Health, 2012-2014 Asthma Emergency Department Visit Rate per 10,000, Aged 0-17 years, https://www.health.ny.gov/statistics/ny_asthma/data/a14.htm & https://www.health.ny.gov/statistics/ny_asthma/ed/zipcode/westc_t3.htm

There are 221,434 kids in Westchester County.



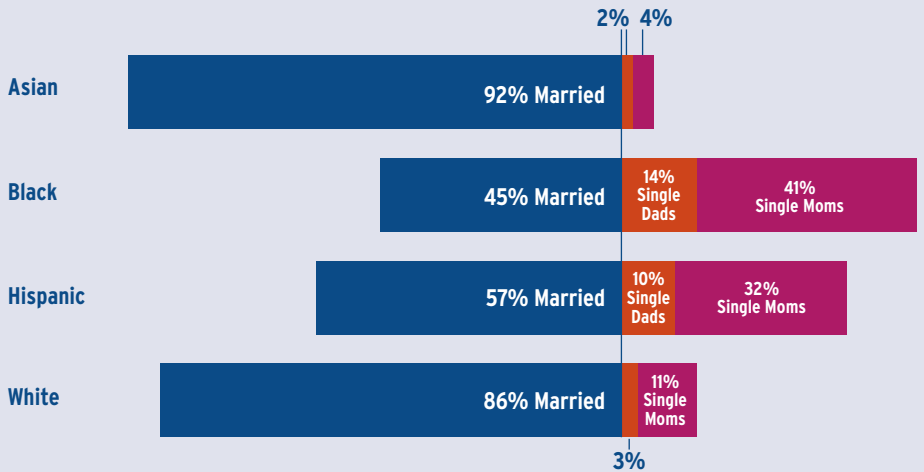
U.S. Census Bureau, 2015 American Community Surveys-Year Estimates, Table B09001, <http://factfinder2.census.gov>

RACE AFFECTS OUTCOMES FOR CHILDREN ACROSS THEIR LIFETIMES

For many people, the word “Westchester” means success. Unfortunately, the data shows that Westchester is fraught with inequality. Race and location – factors beyond a child’s control – still play too large a part in determining whether or not a child will succeed. The good news? Communities, like those featured on our cover, are coming together and doing their part to change this story.

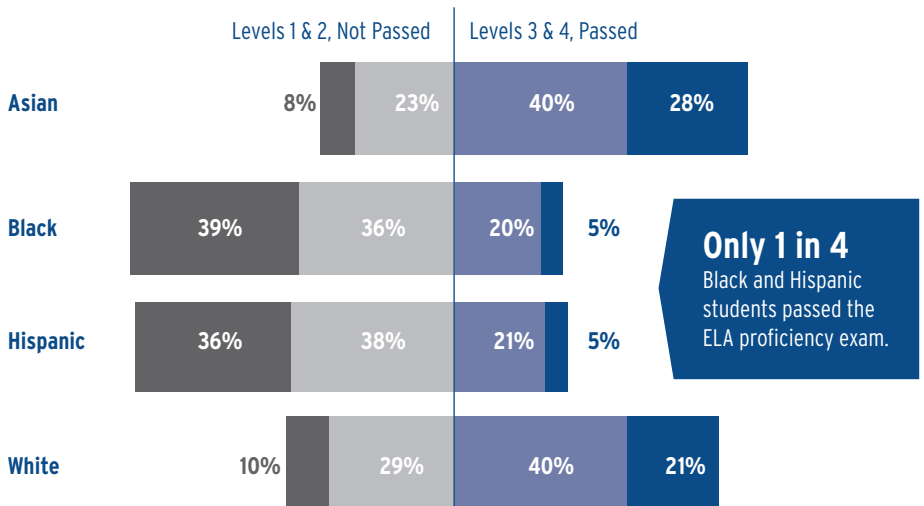
NOTE: The category “White” is defined as “White, non-Hispanic” throughout this publication.

Household Types by Race



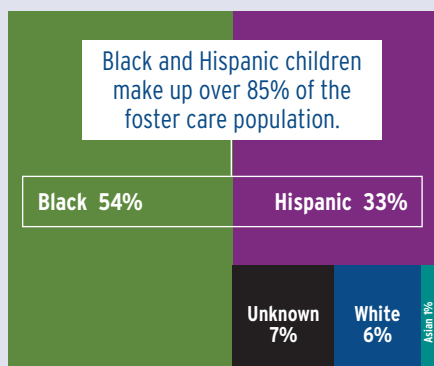
U.S. Census Bureau, 2015 American Community Survey 1-Year Estimates, Tables S0901, <http://factfinder2.census.gov>

Who Passed and Did Not Pass the ELA Proficiency Exam in 2016? (Students Grade 3-8)



New York State Department of Education, 2016 Westchester County Grades 3-8 ELA Assessment Data, <https://data.nysed.gov/>

Westchester’s Foster Care Population by Race



New York State Office of Children and Family Services, 2014 Monitoring and Analysis Profiles with Selected Trend Data: 2011-2015, <http://ocfs.ny.gov/main/reports/maps/counties/Westchester.pdf>

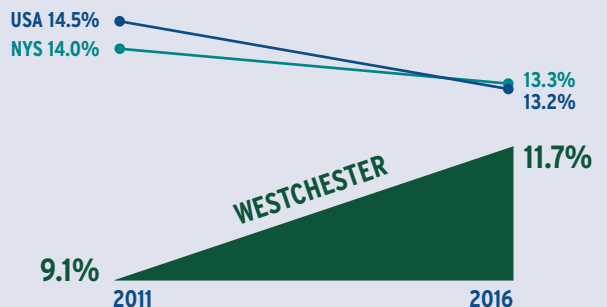
12,835

Youth ages 16-24 are not in school and not working.

(2016 Estimate)

Percent of Disconnected Youth on Rise

Both national and state rates of youth disconnection went down between the years 2011 and 2016. However, Westchester County’s rate of youth disconnection went up.

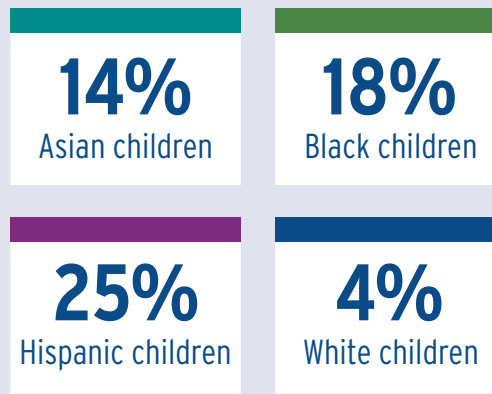


The Opportunity Index: How Opportunity Measures Up in Your Community <http://opportunityindex.org/app/uploads/2016/12/Opportunity-Index-2016-Briefing-Book-FINAL.pdf>; <http://opportunityindex.org/#4.00/37.028/-95.753/-/New+York>; <http://opportunityindex.org/#6.00/37.93/-84.071/Westchester/New+York>

Household Types by Income

	Married Couples	Single Dads	Single Moms
Median Income	\$151,812	\$50,149	\$34,367
Percentage of Children in this Household Type	72%	7%	21%

Children Living in Poverty by Race

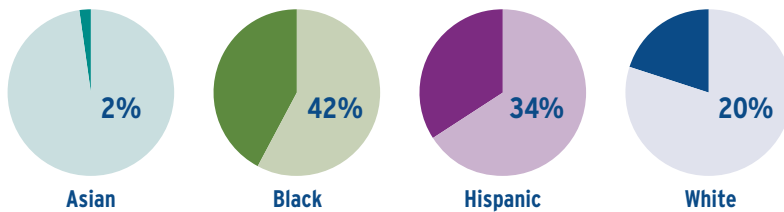


Race, Families & Survival Budgets

The Westchester County Household Survival Budget for a family of four is \$77,892 (2016 United Way ALICE Report). A significant portion of families, regardless of race, do not meet the survival threshold. Black and Hispanic families struggle more than their White or Asian counterparts to make it across the line.

U.S. Census Bureau, 2015 American Community Survey 1-Year Estimates, Tables B17001B, B17001D, B17001H, B17001I, <http://factfinder2.census.gov>

Disparities in School Suspensions



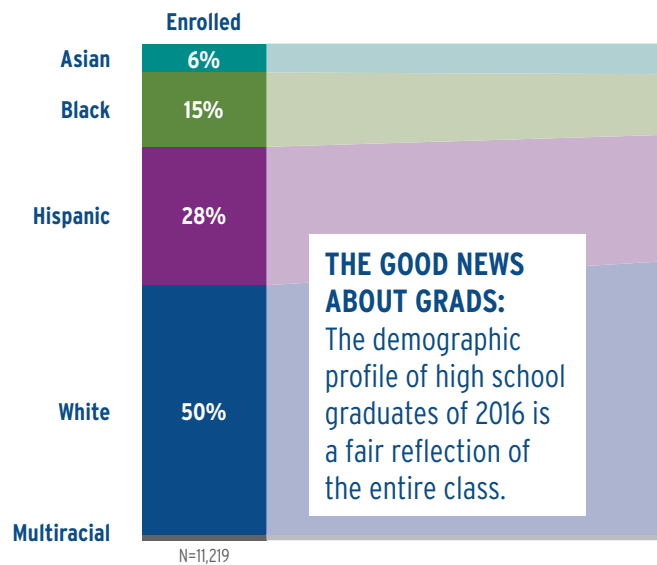
Almost half of all suspensions in 2013-14 were of black students.



Only 3% of all students were suspended in the 2013-14 school year. **However, BOYS made up a HUGE majority of suspensions.**

U.S. Department of Education: 2013-14 CRDC Survey: Suspension Rates, <http://ocrdata.ed.gov/>

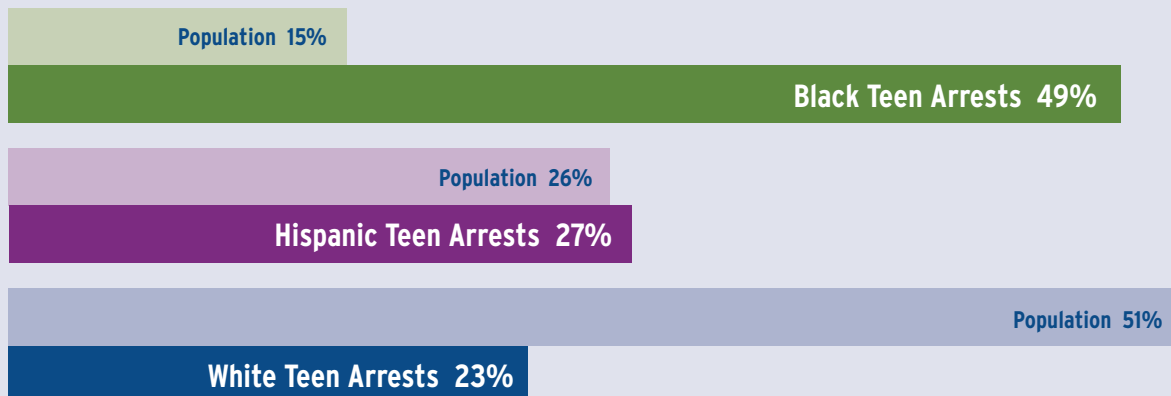
Westchester Class of 2016 - Who Graduates



THE GOOD NEWS ABOUT GRADS:
The demographic profile of high school graduates of 2016 is a fair reflection of the entire class.

NOTE: Multiracial: Enrolled - 1%; Graduated - 1%; Dropped Out - 2%; Reflects 4-year Graduation (June).

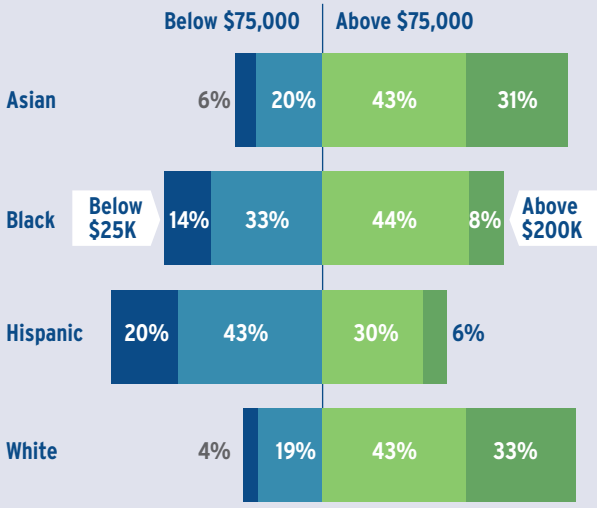
For Teens in the Justice System, Race Matters



Population: U.S. Census Bureau, 2015 American Community Survey, 1-Year Estimates, Tables B01001, B01001B, B01001H, B01001I. Arrest Data: New York State Division of Criminal Justice Services. Computerized Criminal History System as of 1/17/2017

Of the arrests in 2016 for Westchester youth age 16 & 17, 85% were misdemeanors and nonviolent felonies.

New York State Division of Criminal Justice Services. Computerized Criminal History System as of 1/17/2017.



U.S. Census Bureau, 2014 American Community Survey 1-Year Estimates, Table B19101B, B19101D, B19101H, B19101I, <https://factfinder.census.gov/>

FACT
More than 63% of Hispanic families (an estimated 31,887 families) make less than the Household Survival Budget.

ANOTHER FACT
1 out of 3 White households make more than \$200K a year, but only 1 out of 17 Hispanic households make more than \$200K a year.

\$159,408
United Way ALICE Household Stability Budget - Family earns enough for a 10% savings plan and the cost of a smartphone for two adults.

\$77,892
United Way ALICE Household Survival Budget - Family earns enough for child care, health care, and taxes.

\$60,400
National Low Income Housing Coalition Survival Budget - Families earn enough to allocate 30% of their annual income to rent a 2 bedroom apartment in Westchester.

\$49,200
200% Federal Poverty Level - Families at this level are considered "low-income."

..... Median Income for Single Dads

..... Median Income for Single Moms

\$24,600
100% Federal Poverty Level - Only families with income below this are considered "in poverty."

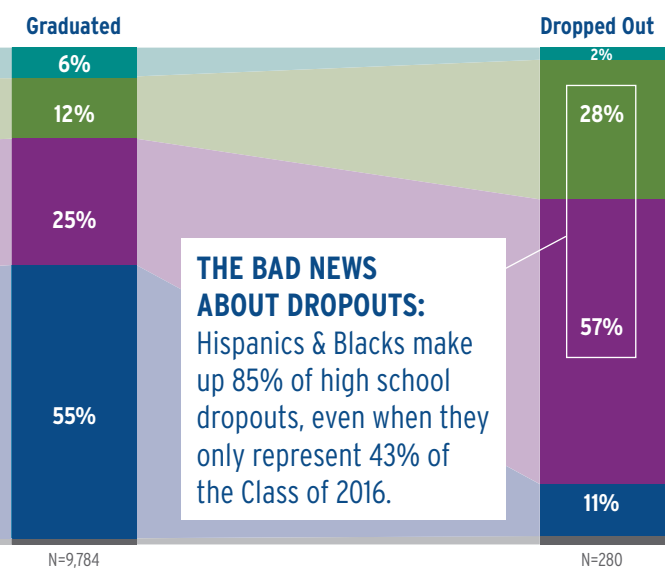
How much does a family of four need to thrive in Westchester?

Answers vary.



United Way ALICE Household Stability Budget (2016): <https://spaa.newark.rutgers.edu/united-way-ALICE-NY>
The United Way ALICE Report: New York (2016). <http://unitedwayalice.org/NewYork/>; National Low Income Housing Coalition, Out of Reach: No Refuge for Low Income Renters (2016). http://nlihc.org/sites/default/files/oor/OOR_2016.pdf; Federal Poverty Level (2017) U.S. Department of Health and Human Services, 2017 Poverty Guidelines, <https://aspe.hhs.gov/poverty-guidelines>

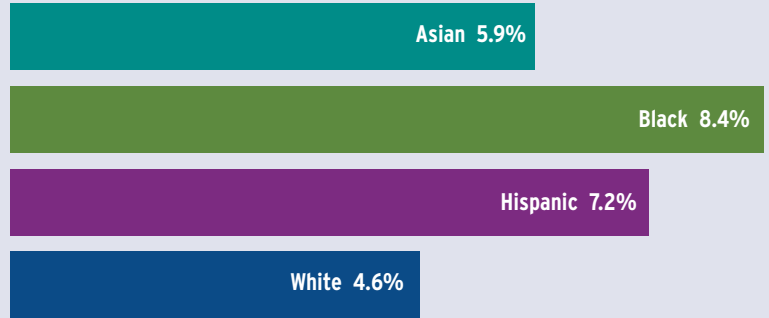
? Who Leaves?



New York State Education Department, https://data.nysed.gov/files/gradrate/15-16/gradrate_2016.zip

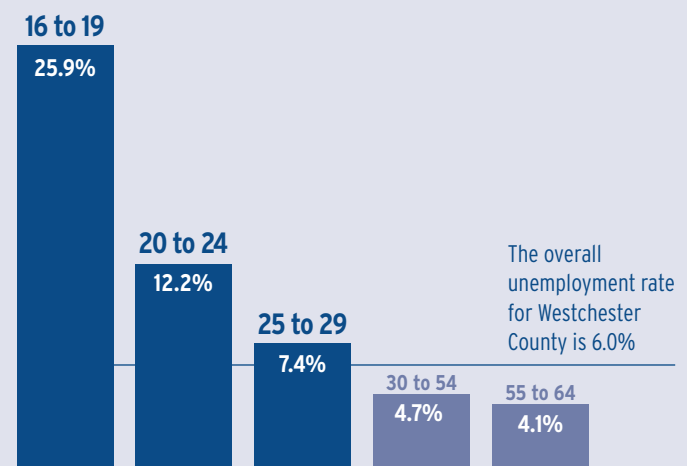
Unemployment by Race

Blacks and Hispanics, 16 and over, are **UNEMPLOYED** at significantly higher rates than Whites in Westchester County.



U.S. Census Bureau, 2015 American Community Survey 1-Year Estimates, Table S2301, <http://factfinder2.census.gov>

Unemployment by Age



U.S. Census Bureau, 2015 American Community Survey 1-Year Estimates, Table S2301, <http://factfinder2.census.gov>

95.2% of Westchester's children, 0-5 years old, living in poverty are NOT receiving the Home Visiting services they need.

Home Visiting meets families where they are and provides parent and child supports based on the family's unique needs.

Home is Where the Start Is, 2016, Schuyler Center for Analysis and Advocacy, <http://www.scaany.org/policy-areas/maternal-infant-and-early-childhood/>

Child Welfare Facts - 2015

4,169 Live births were paid for by Medicaid

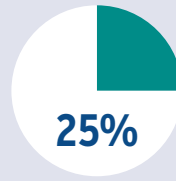
512 Children in Foster Care
There were 532 children in 2014; 609 children in 2011.

5,171 Reports of child abuse (1,030 substantiated)
1,025 of 5,157 cases in 2014; 1,206 of 5,735 cases in 2011.

New York State Medicaid Claims, 2015, Salient Interactive Miner (SIM), Data extracted on 3/13/2015; New York State Department of Children and Family Services, <http://ocfs.ny.gov/main/reports/maps/counties/westchester.pdf>

Westchester Births Over the Last 5 Years

Mothers with delayed or no prenatal care in 2014
(Care given in 2nd trimester or later)



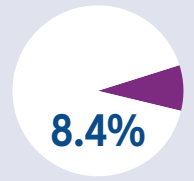
Compare with...
24% in 2013 | 27% in 2009

Babies born preterm in 2014
(Less than 37 weeks)



Compare with...
12% in 2013 | 13% in 2009

Babies born with low birthweight in 2014
(Less than 5 lb. 8 oz.)

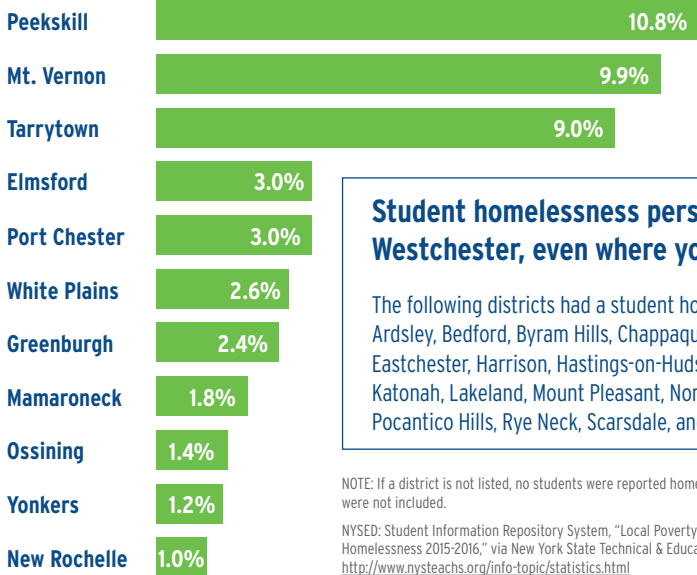


Compare with...
7.7% in 2013 | 8.4% in 2009

NOTE: Cases that were unknown were not included in the calculations.

New York State Department of Health, Vital Statistics of New York State 2014, 2013 and 2009, Tables 12, 12b, 11b, and 11a, https://www.health.ny.gov/statistics/vital_statistics/

Hidden Homelessness

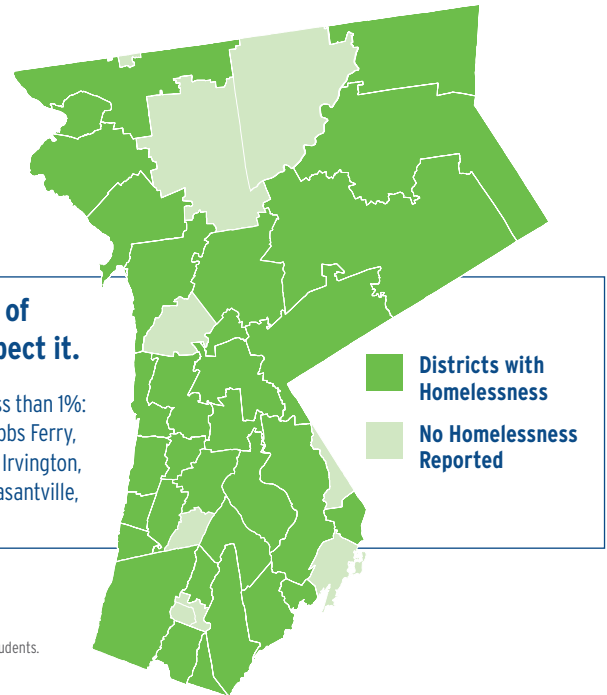


Student homelessness persists in all areas of Westchester, even where you might not expect it.

The following districts had a student homelessness rate of less than 1%: Ardsley, Bedford, Byram Hills, Chappaqua, Croton-Harmon, Dobbs Ferry, Eastchester, Harrison, Hastings-on-Hudson, Hendrick-Hudson, Irvington, Katonah, Lakeland, Mount Pleasant, North Salem, Pelham, Pleasantville, Pocantico Hills, Rye Neck, Scarsdale, and Valhalla.

NOTE: If a district is not listed, no students were reported homeless in 2015-16. Charter schools were not included.

NYSED: Student Information Repository System, "Local Poverty Rates & Student Homelessness 2015-2016," via New York State Technical & Education Assistance for Homeless Students. <http://www.nysteachs.org/info-topic/statistics.html>



Poverty in Westchester by Age

Age Group	2015	2014 One Year Ago	2010 Five Years Ago
All Ages	10.0%	10.2%	8.8%
Under 18	12.8%	12.8%	10.9%
Under 5	13.3%	14.0%	12.4%

2015, 2014, & 2010 American Community Survey 1-Year Estimates, Table DP03, <https://factfinder.census.gov>

59,493 Children live in low-income* households

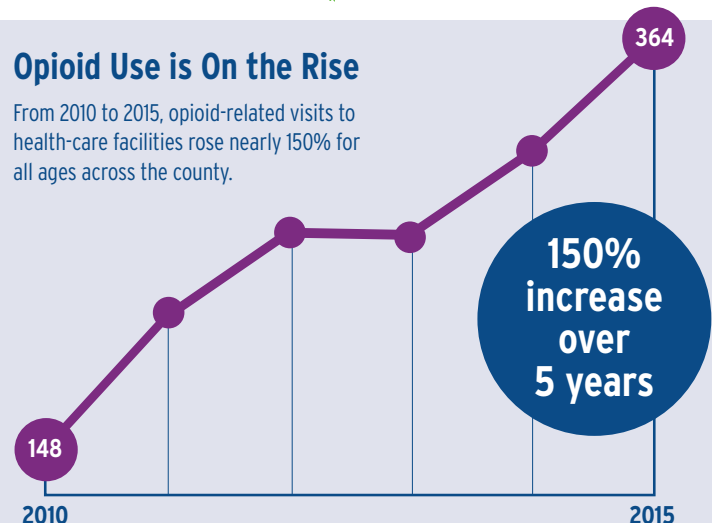
This number greatly exceeds the combined populations of Westchester's four richest towns: Scarsdale, Pound Ridge, North Castle and Rye.

* Low-income = at or below 200% of the poverty level, which for a family of four was \$48,500 in 2015 and is now \$49,200 in 2017

NOTE: Determination of placement in regards to wealth is based on per capita income across all Westchester's county subdivisions. Number of Low Income Children: 2015 American Community Survey 5-Year Estimates, Table B17024; Population: Table B01003; Per Capita Income: Table B19301

Opioid Use is On the Rise

From 2010 to 2015, opioid-related visits to health-care facilities rose nearly 150% for all ages across the county.



All Payer Opioid-Related Facility Visits in New York State: Beginning 2010 (SPARCS) <https://health.data.ny.gov/Health/All-Payer-Opioid-Related-Facility-Visits-in-New-Yo/rxm6-fp54>

District Education Profiles

School District	% with BA or Higher (2015)	LEP Rate (2016)	Free + Reduced Lunch (2016)	Chronic Absence (2014)	Suspension Rate (2014)	Reading Proficiency (2016)		Graduation Rate (2016)		HS Counselor: Student Ratio (2014)
						3rd Gr	8th Gr	4 Yr	6 Yr	
Westchester County	47%	8%	37%	13%	3%	52%	48%	87%	91%	1:196
Ardley	69%	2%	7%	0%	0%	71%	73%	95%	98%	1:160
Bedford	53%	12%	27%	8%	1%	55%	53%	90%	94%	1:175
Blind Brook	80%	2%	0%	0%	0%	70%	56%	99%	99%	1:158
Briarcliff Manor	73%	0%	1%	6%	1%	72%	77%	100%	100%	1:147
Bronxville	81%	1%	0%	3%	1%	87%	74%	98%	100%	1:164
Byram Hills	77%	0%	3%	3%	0%	62%	67%	99%	100%	1:179
Chappaqua	87%	1%	2%	6%	1%	82%	80%	97%	100%	1:161
Croton-Harmon	64%	3%	0%	11%	1%	71%	64%	98%	99%	1:270
Dobbs Ferry	56%	3%	14%	6%	2%	50%	76%	96%	97%	1:223
Eastchester	55%	6%	0%	9%	0%	56%	59%	92%	99%	1:178
Edgemont	81%	2%	0%	4%	0%	84%	83%	99%	100%	1:154
Elmsford	42%	16%	47%	12%	1%	38%	29%	84%	88%	1:219
Greenburgh	55%	6%	55%	12%	3%	41%	35%	90%	96%	1:179
Harrison	50%	7%	18%	9%	3%	62%	61%	97%	98%	1:183
Hastings-On-Hudson	75%	1%	5%	0%	1%	72%	61%	97%	98%	1:129
Hendrick-Hudson	46%	2%	25%	9%	3%	56%	49%	91%	92%	1:165
Irvington	68%	1%	9%	9%	2%	78%	76%	93%	99%	1:143
Katonah-Lewisboro	74%	1%	5%	7%	1%	65%	73%	95%	99%	1:168
Lakeland	41%	1%	19%	4%	3%	66%	49%	95%	97%	1:191
Mamaroneck	66%	4%	17%	10%	1%	65%	65%	95%	97%	1:147
Mount Pleasant	43%	2%	9%	12%	1%	65%	62%	95%	99%	1:147
Mount Vernon	28%	8%	74%	34%	8%	31%	23%	61%	74%	1:252
New Rochelle	42%	11%	55%	12%	4%	42%	44%	82%	87%	1:285
North Salem	60%	2%	10%	6%	0%	57%	85%	94%	98%	1:169
Ossining	41%	10%	54%	7%	2%	36%	26%	76%	85%	1:211
Peekskill	27%	21%	83%	24%	6%	23%	21%	70%	77%	1:287
Pelham	63%	1%	10%	6%	1%	74%	66%	96%	98%	1:171
Pleasantville	63%	2%	10%	7%	2%	73%	59%	96%	100%	1:150
Pocantico Hills	51%	2%	20%	9%	7%	71%	71%	N/A	N/A	
Port Chester - Rye	23%	26%	69%	8%	6%	34%	27%	87%	89%	1:209
Rye City	74%	2%	2%	2%	1%	74%	68%	96%	97%	1:191
Rye Neck	54%	3%	14%	5%	2%	70%	75%	97%	98%	1:150
Scarsdale	87%	2%	0%	9%	0%	87%	80%	97%	99%	1:190
Somers	55%	1%	7%	5%	1%	62%	58%	95%	98%	1:219
Tarrytown	48%	15%	55%	10%	4%	47%	40%	86%	89%	1:220
Tuckahoe	55%	5%	12%	7%	2%	67%	57%	87%	94%	1:135
Valhalla	54%	3%	16%	4%	1%	58%	45%	97%	98%	1:116
White Plains	49%	15%	44%	10%	3%	47%	35%	87%	90%	1:152
Yonkers	31%	12%	78%	30%	6%	33%	27%	78%	79%	1:270
Yorktown	57%	2%	8%	6%	1%	64%	61%	95%	98%	1:421

% of People with BA or Higher - U.S. Census Bureau, 2015 American Community Survey 5-Year Estimates, Table S1501, <http://factfinder2.census.gov>; LEP, Free & Reduced Lunch, Reading Proficiency, Graduation, from NYS Education Department, <http://data.nysed.gov>; Chronic Absence, Suspension & Counselor Ratio, from Office of Civil Rights, <http://ocrdata.ed.gov/> NOTE: Chronic absence and suspension rates for Westchester County were calculated based on data pulled on June 7, 2016.



Westchester Children's Association
 470 Mamaroneck Avenue, Suite 304
 White Plains, NY 10605
 (914) 946-7676

For more details and discussion about this data, visit bit.ly/wcadatabulletin

Project Co-Leads: Limarie Cabrera and Denise Killeen.
 Design: Tara Frammer of Tara Frammer Design.

Much thanks to Sarah Aparicio for her assistance with data collection and review and Stephanie Doctor for her work in reviewing additional data sets in R. Major support for this publication was provided by The John P. and Constance A. Curran Charitable Foundation and The Westchester Community Foundation.

Follow WCA on your favorite social media sites.
 Keyword: @wca4kids    