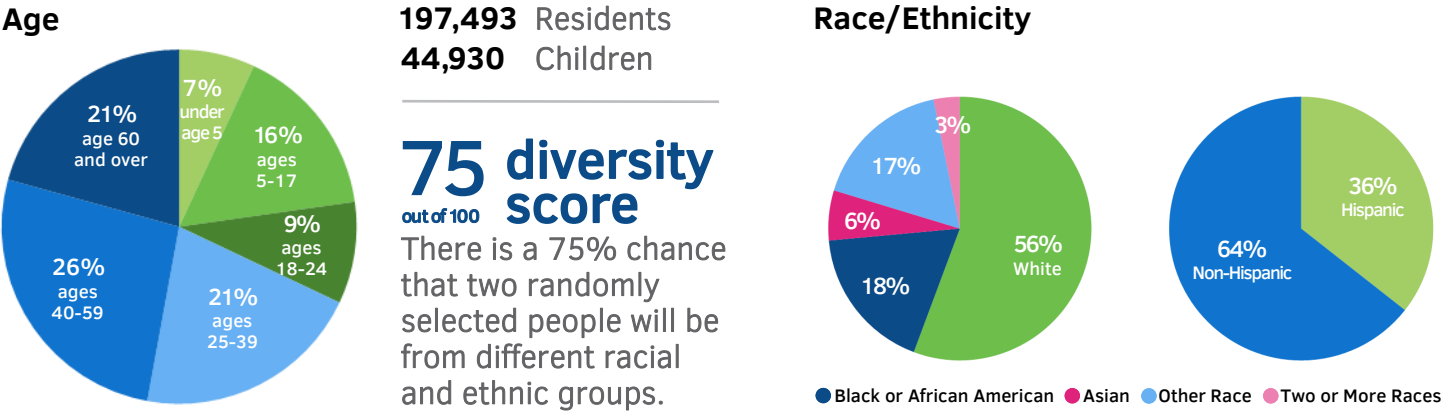
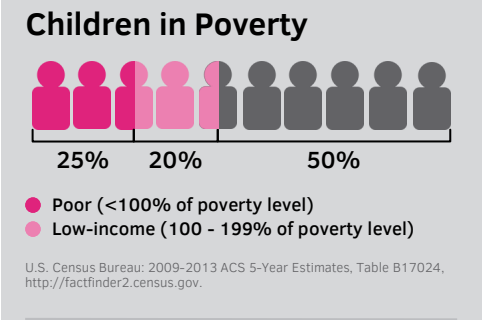


DEMOGRAPHICS



U.S. Census Bureau: 2009-2013 American Community Survey (ACS) 5-Year Estimates, Age: Table B01001; Diversity calculated based on: Table B03002; Race/Ethnicity: Table DP05; <http://factfinder2.census.gov>.

ECONOMICS

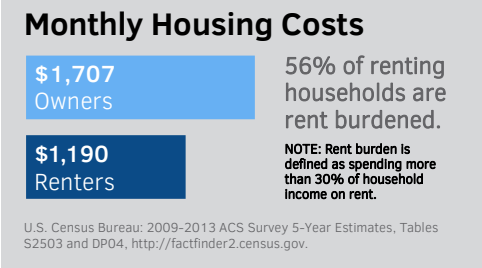


9% of people in the labor force are unemployed.

U.S. Census Bureau: 2009-2013 ACS 5-Year Estimates, Table DP03, <http://factfinder2.census.gov>.

Percent of Children in Family Type	Median Income
56% Married Couple	\$97,215
37% Single Mother	\$27,231
7% Single Father	\$42,118

U.S. Census Bureau: 2009-2013 ACS 5-Year Estimates, Tables S0901 and B19126, <http://factfinder2.census.gov>.



NAFI Youth Police Initiative

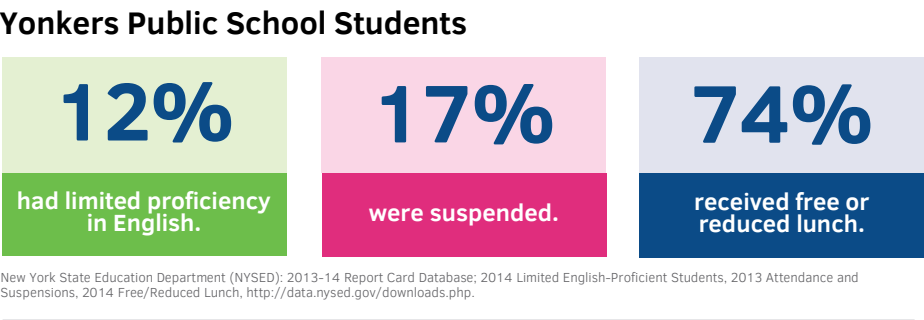
For 5 years, NAFI has offered trust-building activities to improve relationships between youth and law enforcement, including:

- 13 police officers
- 3 probation officers
- 100+ youth

The program aims to keep kids away from gangs and violence, and encourage police officers to engage with their communities.

Jim Isenberg, Executive Director, NAFI-NY; Youth and Police Initiative, <http://www.nafi.com/nafini/innovations/youthandpoliceinitiative.aspx>.

EDUCATION



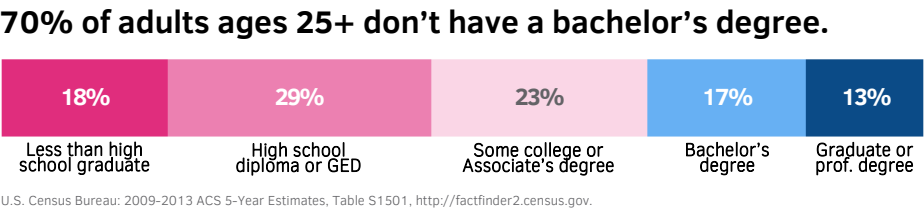
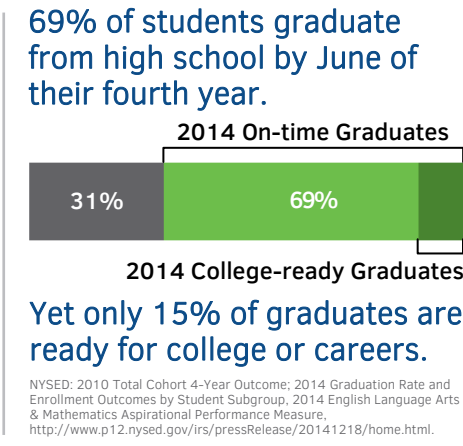
Academic Proficiency Rates*

Subject-Grade	2014	2015	Trend
Math-3rd	28%	31%	↑
Math-8th	14%	16%	↑
ELA-3rd	21%	25%	↑
ELA-8th	21%	22%	↑

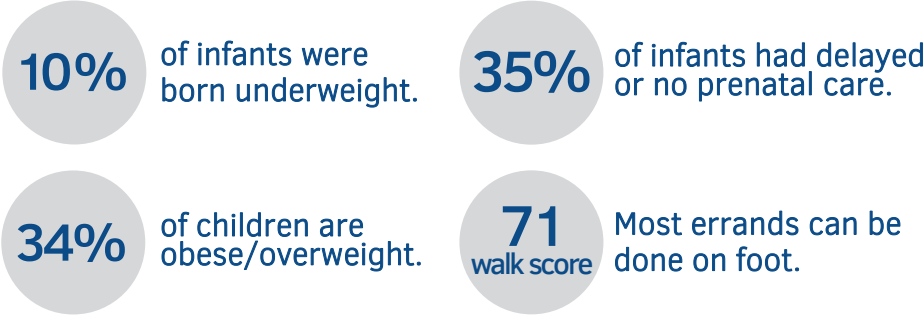
*Percent of students at levels 3 or 4 on English Language Arts & Math exams.

NOTE: As of 2014, 8th grade advanced math students can opt out of the 8th Grade Math exam and take the High School Regents exam instead.

NYSED: 2014-2015 Grades 3-8 English Language Arts and Mathematics District and Building Aggregates, <http://www.p12.nysed.gov/irs/pressRelease/2015800/home.html>.



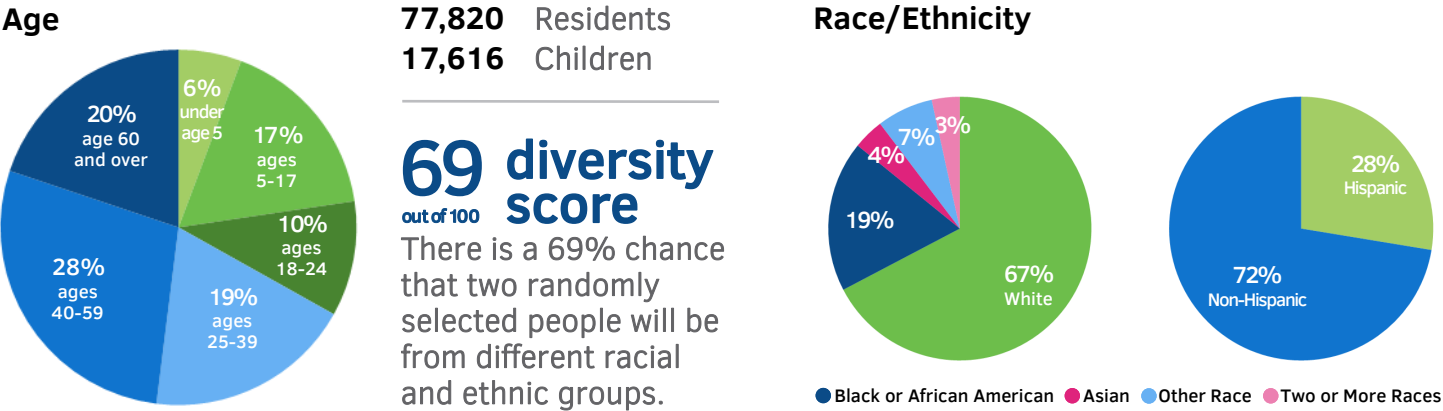
HEALTH



Westchester County Department of Health: 2014-2017 Community Health Assessment and Improvement Plan, Birth Data: 2008-2010 Annual Average, Weight Data: 2008-2010 Combined, http://health.westchestergov.com/images/stories/Data-Stats/Community_Health_Assessment2014-17.pdf. WalkScore® analyzes pedestrian friendliness and distance to amenities: <https://www.walkscore.com/NY/Yonkers>.

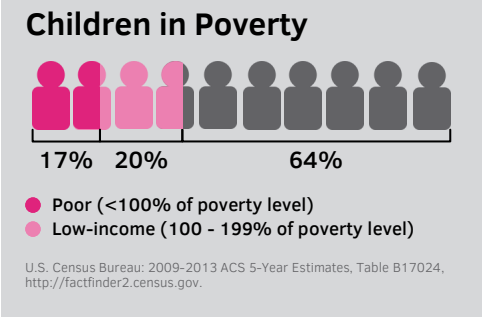
CREDITS: Major support provided by Westchester Community Foundation and The John P. and Constance A. Curran Charitable Foundation. Project leader: Anna Wright. Supervisor: Limarie Cabrera. Data Collection: Joanna Ezratty.

DEMOGRAPHICS



U.S. Census Bureau: 2009-2013 American Community Survey (ACS) 5-Year Estimates, Age: Table B01001; Diversity calculated based on: Table B03002; Race/Ethnicity: Table DP05; <http://factfinder2.census.gov>.

ECONOMICS

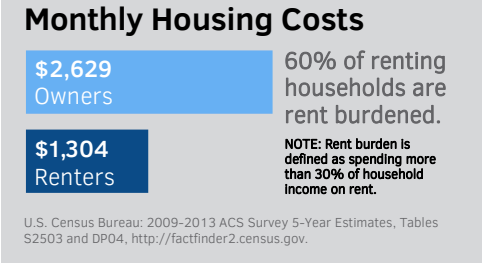


9% of people in the labor force are unemployed.

U.S. Census Bureau: 2009-2013 ACS 5-Year Estimates, Table DP03, <http://factfinder2.census.gov>.

Percent of Children in Family Type	Median Income
67% Married Couple	\$112,793
25% Single Mother	\$30,319
8% Single Father	\$30,122

U.S. Census Bureau: 2009-2013 ACS 5-Year Estimates, Tables S0901 and B19126, <http://factfinder2.census.gov>.

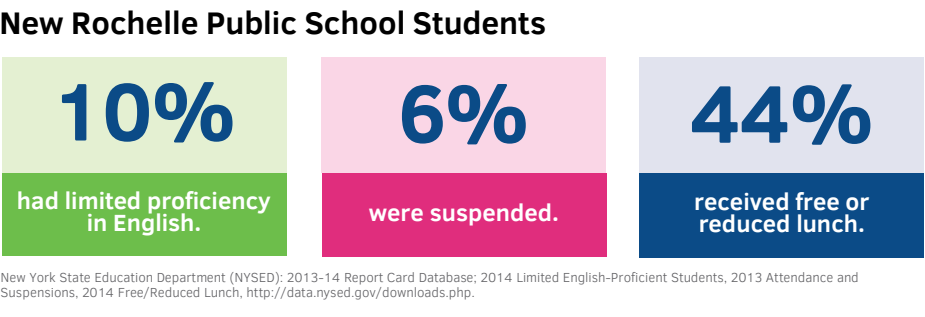


My Brother's Keeper

In April 2015, New Rochelle became the first Westchester community to accept the president's "My Brother's Keeper" challenge. The initiative's goal is for all young people, particularly young men of color, to succeed in school, work and life.

Mayor Noam Bramson, <http://www.noambramson.org/2015/04/new-ro-accepts-my-brothers-keeper-challenge/>.

EDUCATION



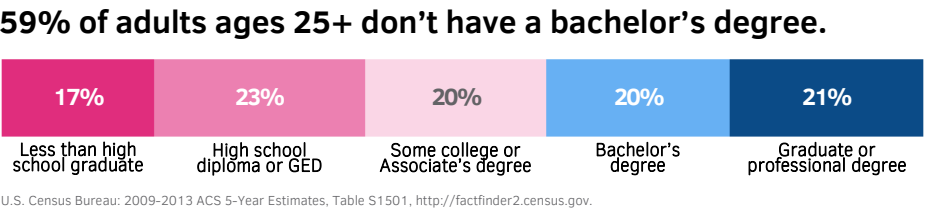
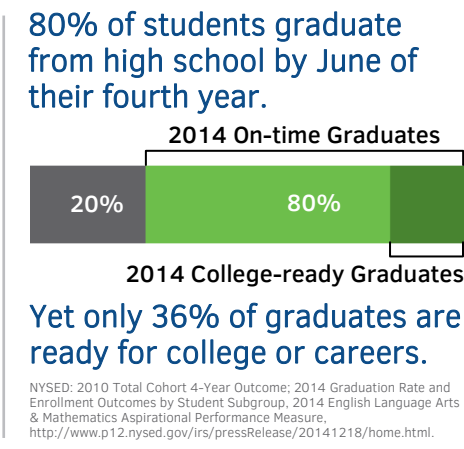
Academic Proficiency Rates*

Subject-Grade	2014	2015	Trend
Math-3rd	44%	42%	↓
Math-8th	33%	3%	↓
ELA-3rd	29%	29%	—
ELA-8th	34%	33%	↓

*Percent of students at levels 3 or 4 on English Language Arts & Math exams.

NOTE: As of 2014, 8th grade advanced math students can opt out of the 8th Grade Math exam and take the High School Regents exam instead.

NYSED: 2014-2015 Grades 3-8 English Language Arts and Mathematics District and Building Aggregates, <http://www.p12.nysed.gov/irs/pressRelease/2015800/home.html>.



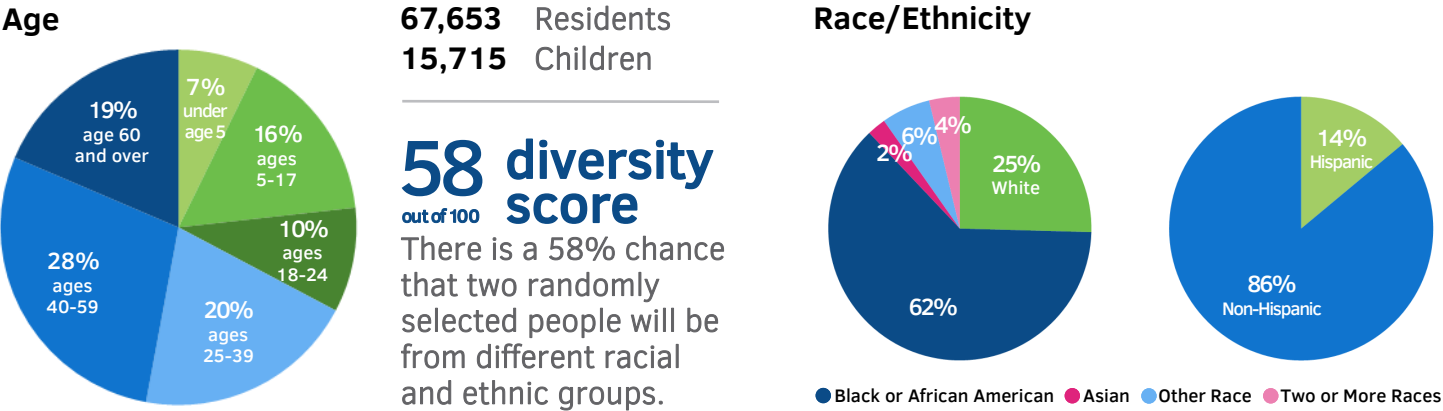
HEALTH



Westchester County Department of Health: 2014-2017 Community Health Assessment and Improvement Plan, Birth Data: 2008-2010 Annual Average, Weight Data: 2008-2010 Combined, http://health.westchestergov.com/images/stories/Data-Stats/Community_Health_Assessment2014-17.pdf. WalkScore® analyzes pedestrian friendliness and distance to amenities: https://www.walkscore.com/NY/New_Rochelle.

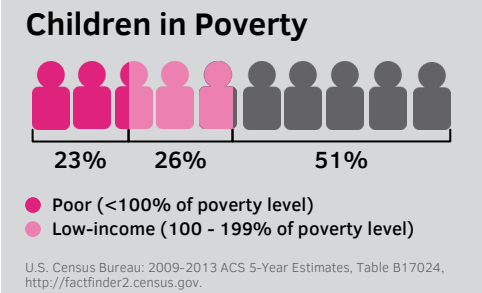
CREDITS: Major support provided by Westchester Community Foundation and The John P. and Constance A. Curran Charitable Foundation. Project leader: Anna Wright. Supervisor: Limarie Cabrera. Data Collection: Joanna Ezratty.

DEMOGRAPHICS



U.S. Census Bureau: 2009-2013 American Community Survey (ACS) 5-Year Estimates, Age: Table B01001; Diversity calculated based on: Table B03002; Race/Ethnicity: Table DP05; <http://factfinder2.census.gov>.

ECONOMICS

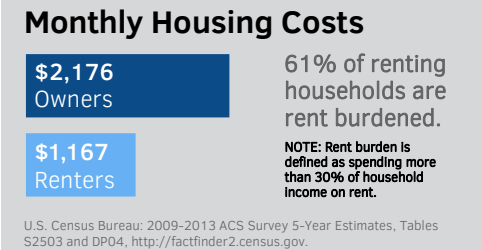


15% of people in the labor force are unemployed.

U.S. Census Bureau: 2009-2013 ACS 5-Year Estimates, Table DP03, <http://factfinder2.census.gov>.

Percent of Children in Family Type	Median Income
45% Married Couple	\$84,940
50% Single Mother	\$31,685
4% Single Father	\$46,181

U.S. Census Bureau: 2009-2013 ACS 5-Year Estimates, Tables S0901 and B19126, <http://factfinder2.census.gov>.



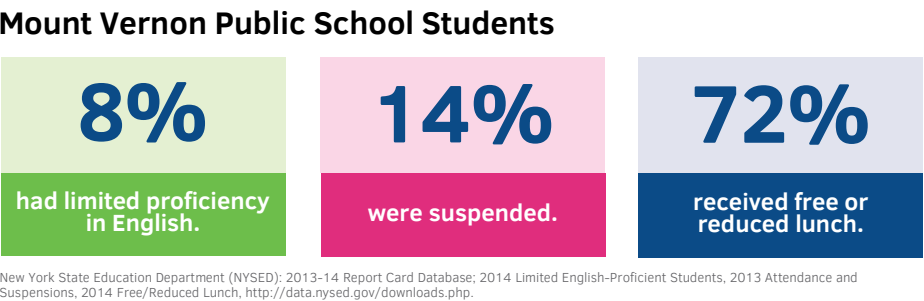
Improving School Climate to Promote Positive Behavior

In 2012, Longfellow Elementary School in Mount Vernon adopted the Positive Behavior Interventions and Supports (PBIS) model in an effort to improve student achievement by reducing problem behavior. The goal is to create a supportive school culture that acknowledges' students good behavior.

Since then, disciplinary referrals, suspensions, and bullying incidents have dropped drastically. Longfellow is currently a School in Good Standing.

The Journal News, <http://www.lohud.com/story/news/local/2015/03/15/positive-feedback-turns-school-around/24823661/>.

EDUCATION



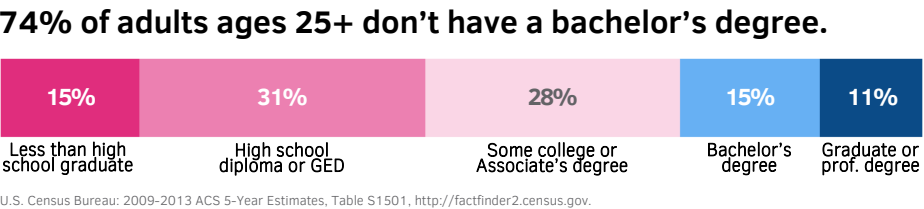
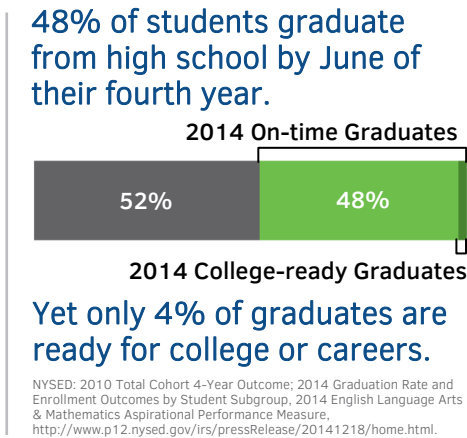
Academic Proficiency Rates*

Subject-Grade	2014	2015	Trend
Math-3rd	17%	18%	↑
Math-8th	6%	3%	↓
ELA-3rd	15%	17%	↑
ELA-8th	12%	12%	—

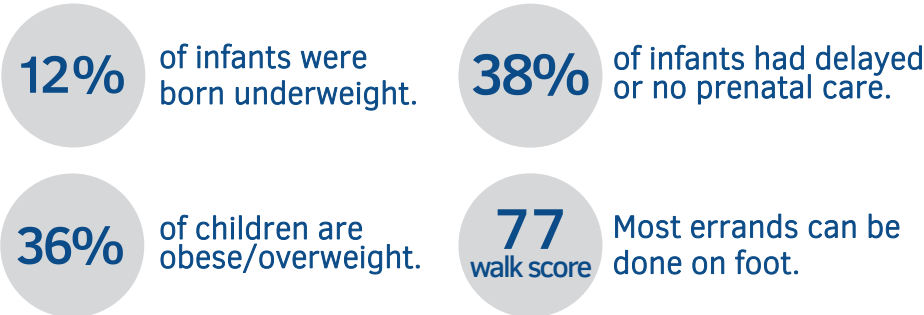
*Percent of students at levels 3 or 4 on English Language Arts & Math exams.

NOTE: As of 2014, 8th grade advanced math students can opt out of the 8th Grade Math exam and take the High School Regents exam instead.

NYSED: 2014-2015 Grades 3-8 English Language Arts and Mathematics District and Building Aggregates, <http://www.p12.nysed.gov/irs/pressRelease/2015800/home.html>.



HEALTH

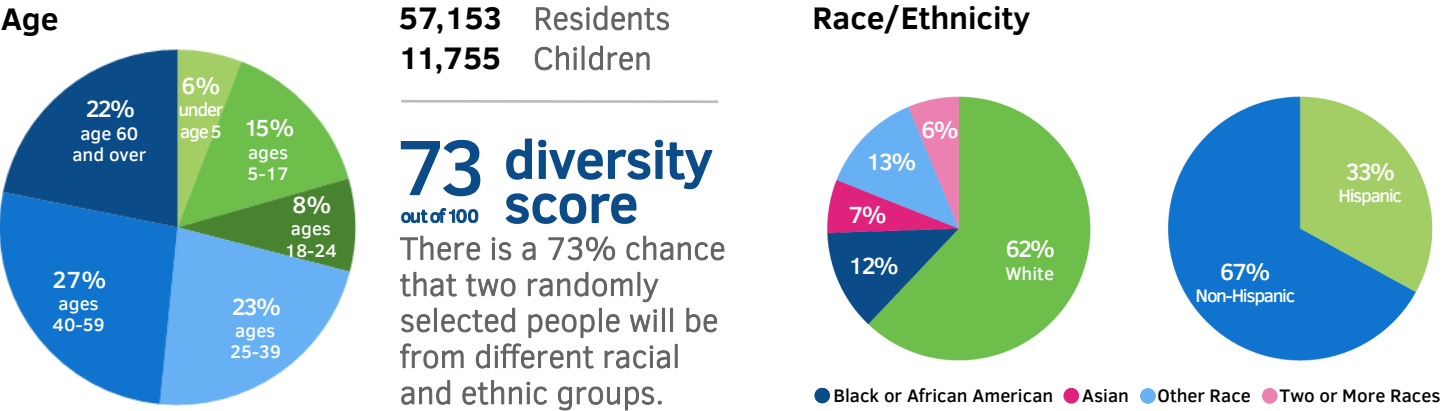


Westchester County Department of Health: 2014-2017 Community Health Assessment and Improvement Plan, Birth Data: 2008-2010 Annual Average, Weight Data: 2008-2010 Combined, http://health.westchestergov.com/images/stories/Data-Stats/Community_Health_Assessment2014-17.pdf. WalkScore® analyzes pedestrian friendliness and distance to amenities: https://www.walkscore.com/NY/Mount_Vernon.

CREDITS: Major support provided by Westchester Community Foundation and The John P. and Constance A. Curran Charitable Foundation. Project leader: Anna Wright. Supervisor: Limarie Cabrera. Data Collection: Joanna Ezratty.

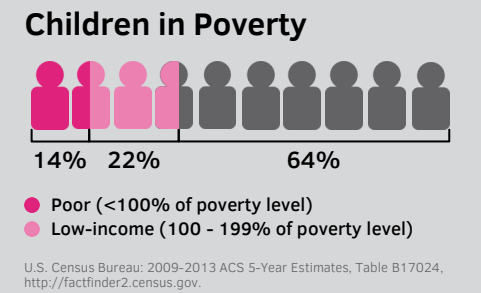
WHITE PLAINS

DEMOGRAPHICS



U.S. Census Bureau: 2009-2013 American Community Survey (ACS) 5-Year Estimates, Age: Table B01001; Diversity calculated based on: Table B03002; Race/Ethnicity: Table DP05; <http://factfinder2.census.gov>.

ECONOMICS

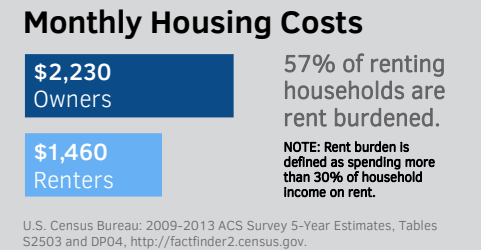


7% of people in the labor force are unemployed.

U.S. Census Bureau: 2009-2013 ACS 5-Year Estimates, Table DP03, <http://factfinder2.census.gov>.

Percent of Children in Family Type	Median Income
72% Married Couple	\$109,757
21% Single Mother	\$30,114
5% Single Father	\$19,796

U.S. Census Bureau: 2009-2013 ACS 5-Year Estimates, Tables S0901 and B19126, <http://factfinder2.census.gov>.



Free Book Celebration

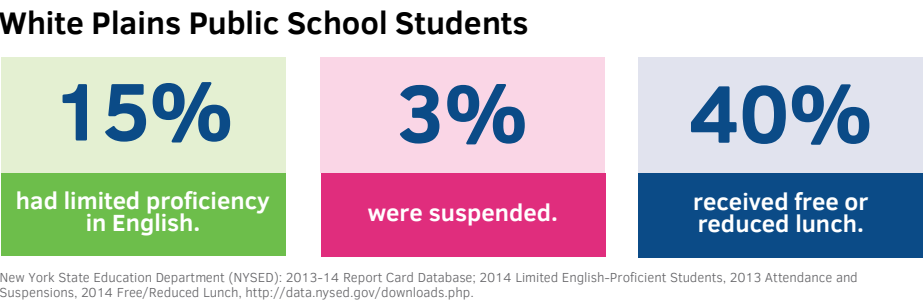
This annual community event, sponsored by the White Plains PTA Council, provides children and teens with free books to encourage reading literacy.

The PTA secures book donations from publishing houses as well as the general public.

This year, over 12,000 books were given away in less than two hours.

Caroline Furry, White Plains PTA Council, <https://www.facebook.com/WhitePlainsPTAFreeBookCelebration>.

EDUCATION



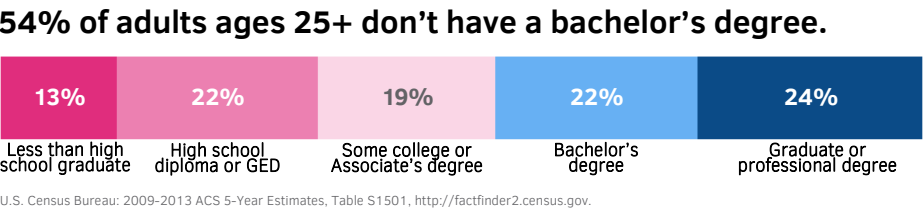
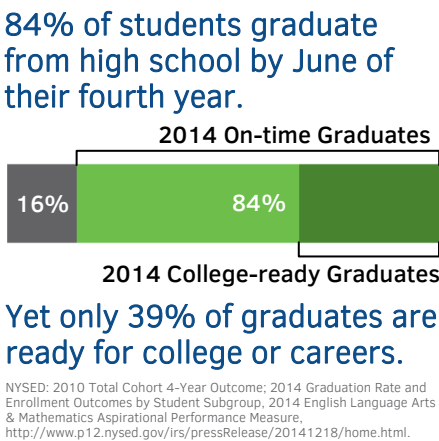
Academic Proficiency Rates*

Subject-Grade	2014	2015	Trend
Math-3rd	38%	35%	↓
Math-8th	13%	10%	↓
ELA-3rd	29%	34%	↑
ELA-8th	31%	29%	↓

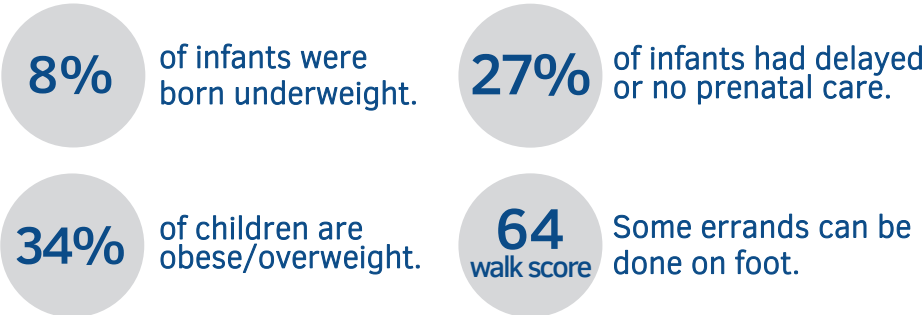
*Percent of students at levels 3 or 4 on English Language Arts & Math exams.

NOTE: As of 2014, 8th grade advanced math students can opt out of the 8th Grade Math exam and take the High School Regents exam instead.

NYSED: 2014-2015 Grades 3-8 English Language Arts and Mathematics District and Building Aggregates, <http://www.p12.nysed.gov/irs/pressRelease/2015800/home.html>.



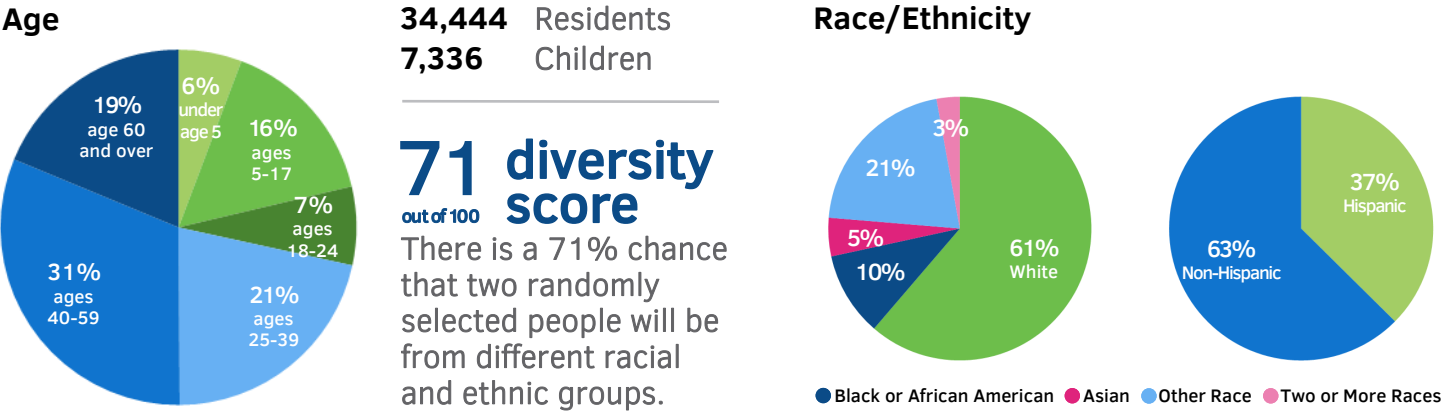
HEALTH



Westchester County Department of Health: 2014-2017 Community Health Assessment and Improvement Plan, Birth Data: 2008-2010 Annual Average, Weight Data: 2008-2010 Combined, http://health.westchestergov.com/images/stories/Data-Stats/Community_Health_Assessment2014-17.pdf. WalkScore® analyzes pedestrian friendliness and distance to amenities: https://www.walkscore.com/NY/White_Plains.

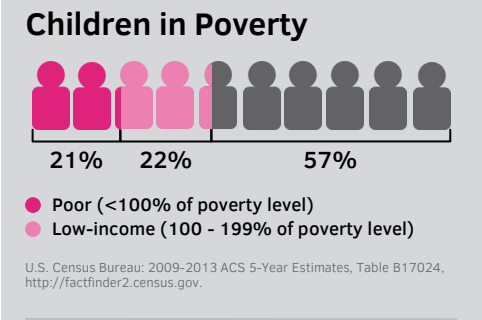
CREDITS: Major support provided by Westchester Community Foundation and The John P. and Constance A. Curran Charitable Foundation. Project leader: Anna Wright. Supervisor: Limarie Cabrera. Data Collection: Joanna Ezratty.

DEMOGRAPHICS



U.S. Census Bureau: 2009-2013 American Community Survey (ACS) 5-Year Estimates, Age: Table B01001; Diversity calculated based on: Table B03002; Race/Ethnicity: Table DP05; <http://factfinder2.census.gov>.

ECONOMICS

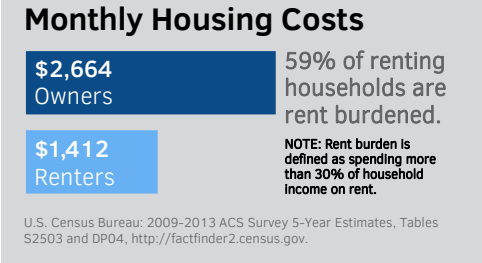


8% of people in the labor force are unemployed.

U.S. Census Bureau: 2009-2013 ACS 5-Year Estimates, Table DP03, <http://factfinder2.census.gov>.

Percent of Children in Family Type	Median Income
65% Married Couple	\$120,677
27% Single Mother	\$30,455
7% Single Father	\$23,523

U.S. Census Bureau: 2009-2013 ACS 5-Year Estimates, Tables S0901 and B19126, <http://factfinder2.census.gov>.



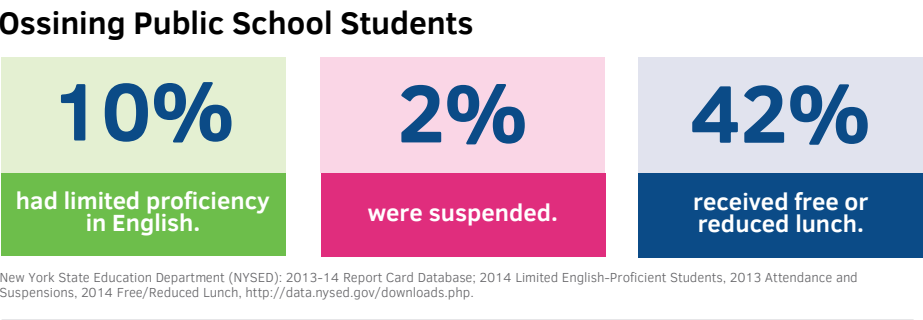
Lucky to Live in Ossining

In 2014, Ossining Communities That Care launched a substance abuse campaign. Instead of focusing on negative statistics, the campaign emphasized the positive behaviors of Ossining High School students.

According to the campaign, 2 in 3 high schoolers don't drink alcohol, 8 in 10 don't binge drink, and 8 in 10 don't smoke marijuana.

Ossining Communities That Care, <https://www.facebook.com/OssiningCommunitiesThatCare>.

EDUCATION



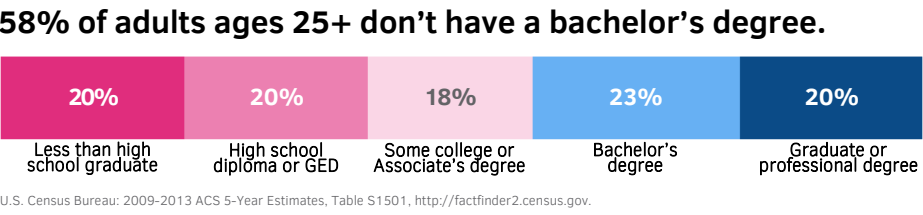
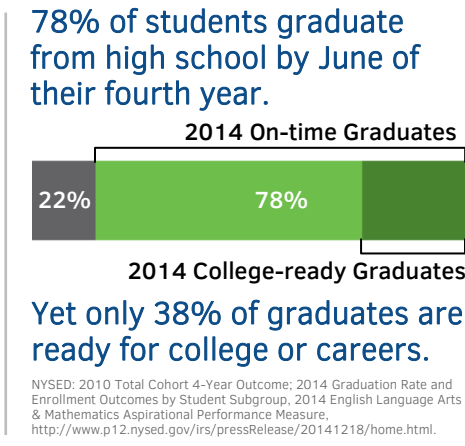
Academic Proficiency Rates*

Subject-Grade	2014	2015	Trend
Math-3rd	43%	42%	↓
Math-8th	0%	15%	↑
ELA-3rd	29%	20%	↓
ELA-8th	29%	29%	—

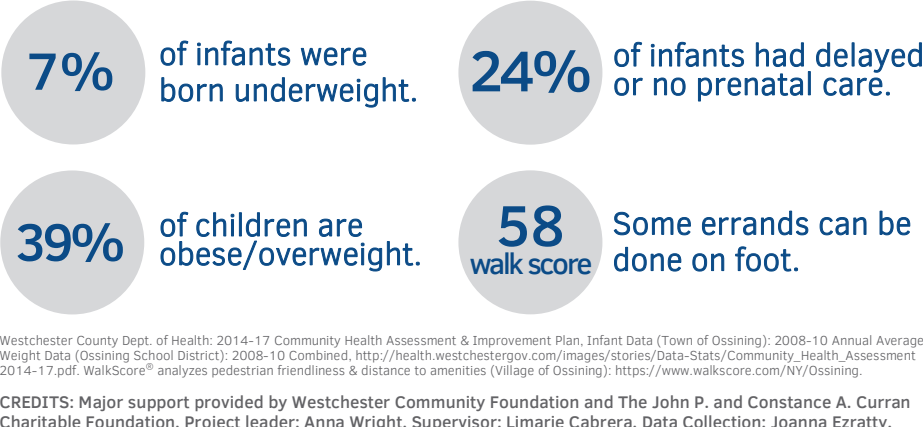
*Percent of students at levels 3 or 4 on English Language Arts & Math exams.

NOTE: As of 2014, 8th grade advanced math students can opt out of the 8th Grade Math exam and take the High School Regents exam instead.

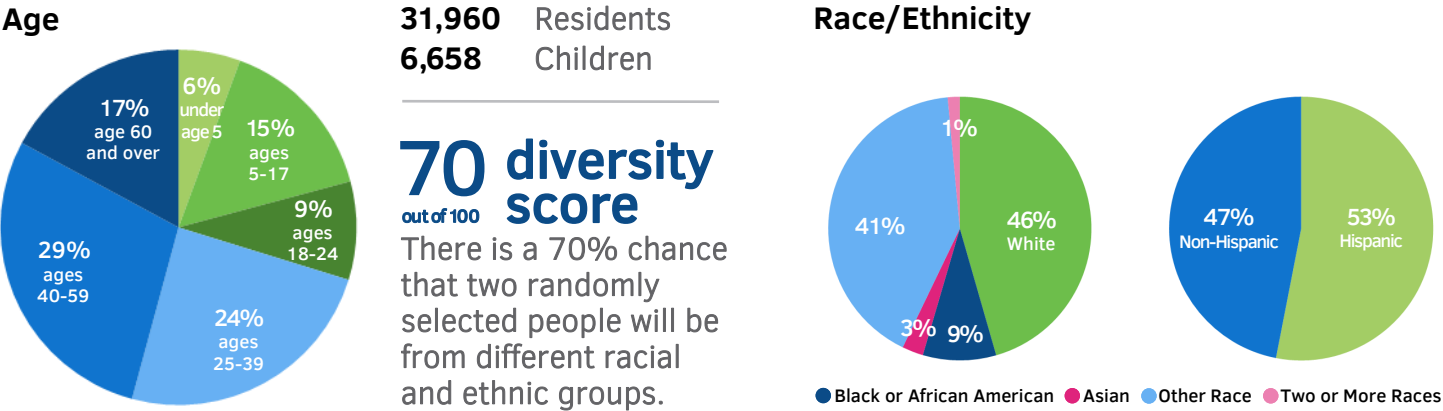
NYSED: 2014-2015 Grades 3-8 English Language Arts and Mathematics District and Building Aggregates, <http://www.p12.nysed.gov/irs/pressRelease/2015800/home.html>.



HEALTH

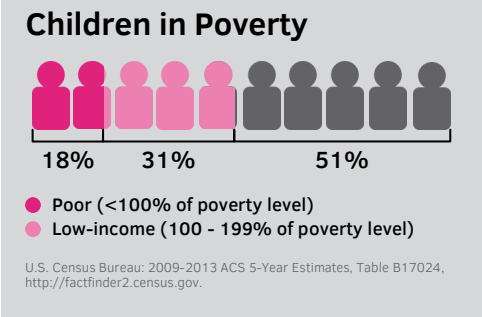


DEMOGRAPHICS



U.S. Census Bureau: 2009-2013 American Community Survey (ACS) 5-Year Estimates, Age: Table B01001; Diversity calculated based on: Table B03002; Race/Ethnicity: Table DP05; <http://factfinder2.census.gov>.

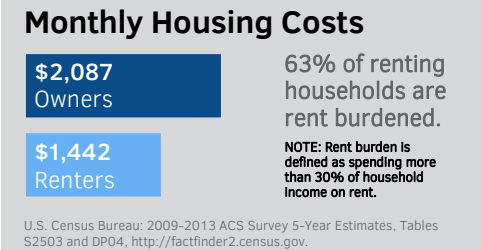
ECONOMICS



9% of people in the labor force are unemployed.
U.S. Census Bureau: 2009-2013 ACS 5-Year Estimates, Table DP03, <http://factfinder2.census.gov>.

Percent of Children in Family Type	Median Income
68% Married Couple	\$83,008
24% Single Mother	\$24,706
8% Single Father	\$19,830

U.S. Census Bureau: 2009-2013 ACS Survey 5-Year Estimates, Tables S0901 and B19126, <http://factfinder2.census.gov>.



School Based Health Center

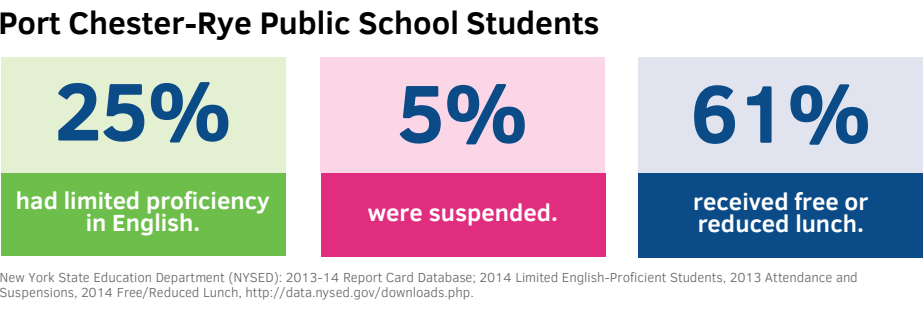
Open Door Family Medical Centers operates five health centers within Port Chester schools.

By providing students with primary care services and health education without the need to miss class, the centers promote both health and academic success.

All students are eligible, and there are no out-of-pocket costs or copays.

Open Door Family Medical Centers: School-Based Health Center Flyer. <https://www.opendoormedical.org/services/school-based-health-centers>.

EDUCATION



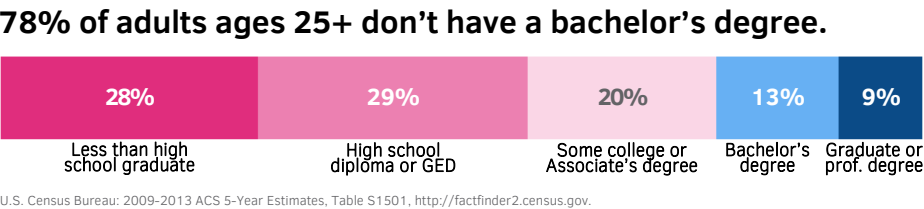
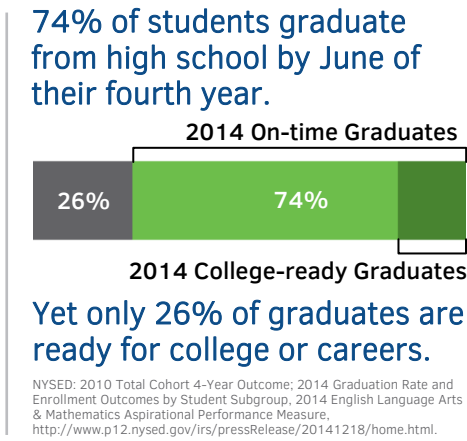
Academic Proficiency Rates*

Subject-Grade	2014	2015	Trend
Math-3rd	23%	26%	↑
Math-8th	2%	8%	↑
ELA-3rd	16%	15%	↓
ELA-8th	16%	24%	↑

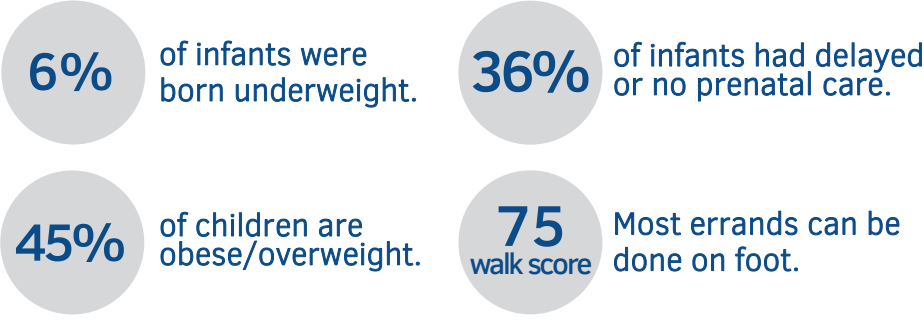
*Percent of students at levels 3 or 4 on English Language Arts & Math exams.

NOTE: As of 2014, 8th grade advanced math students can opt out of the 8th Grade Math exam and take the High School Regents exam instead.

NYSED: 2014-2015 Grades 3-8 English Language Arts and Mathematics District and Building Aggregates, <http://www.p12.nysed.gov/irs/pressRelease/2015800/home.html>.



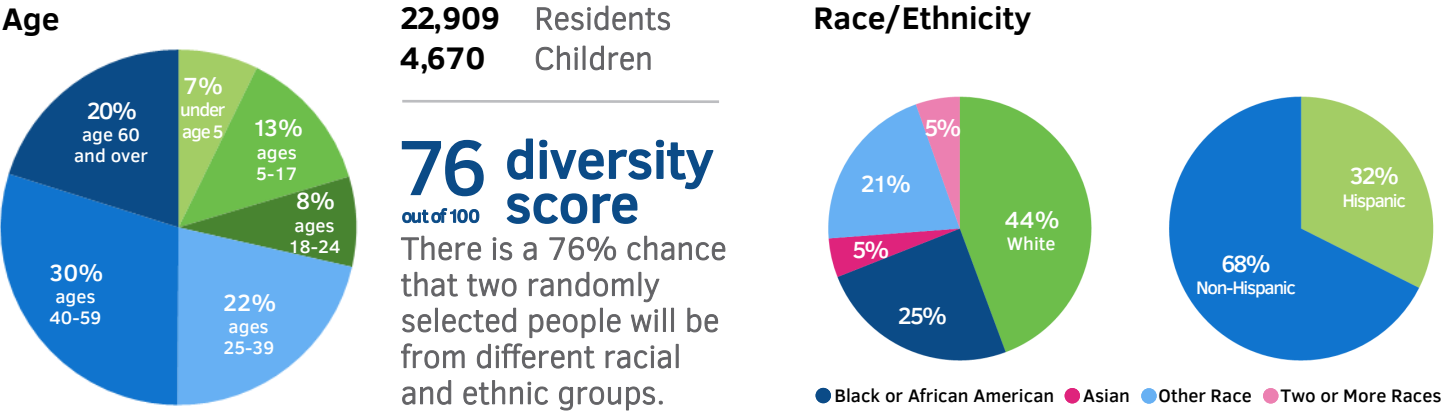
HEALTH



Westchester County Dept. of Health: 2014-17 Community Health Assessment & Improvement Plan, Infant Data (Rye Town): 2008-10 Annual Average, Weight Data (Port Chester-Rye School District): 2008-10 Combined, http://health.westchestergov.com/images/stories/Data-Stats/Community_Health_Assessment_2014-17.pdf. WalkScore® analyzes pedestrian friendliness & distance to amenities (Village of Port Chester): https://www.walkscore.com/NY/Port_Chester.

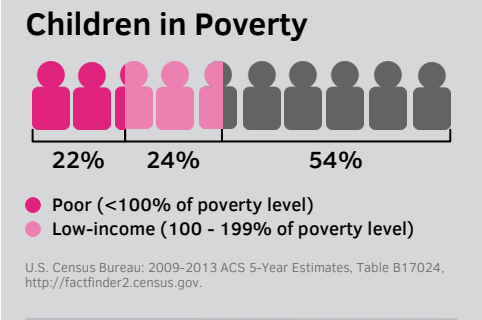
CREDITS: Major support provided by Westchester Community Foundation and The John P. and Constance A. Curran Charitable Foundation. Project leader: Anna Wright. Supervisor: Limarie Cabrera. Data Collection: Joanna Ezratty.

DEMOGRAPHICS



U.S. Census Bureau: 2009-2013 American Community Survey (ACS) 5-Year Estimates, Age: Table B01001; Diversity calculated based on: Table B03002; Race/Ethnicity: Table DP05; <http://factfinder2.census.gov>.

ECONOMICS

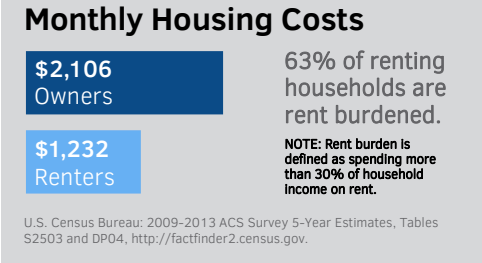


11% of people in the labor force are unemployed.

U.S. Census Bureau: 2009-2013 ACS 5-Year Estimates, Table DP03, <http://factfinder2.census.gov>.

Percent of Children in Family Type	Median Income
- Married Couple	\$86,985
- Single Mother	\$21,595
- Single Father	\$40,208

U.S. Census Bureau: 2009-2013 ACS 5-Year Estimates, B19126, <http://factfinder2.census.gov>. Percent of Children by Family Type is unavailable.



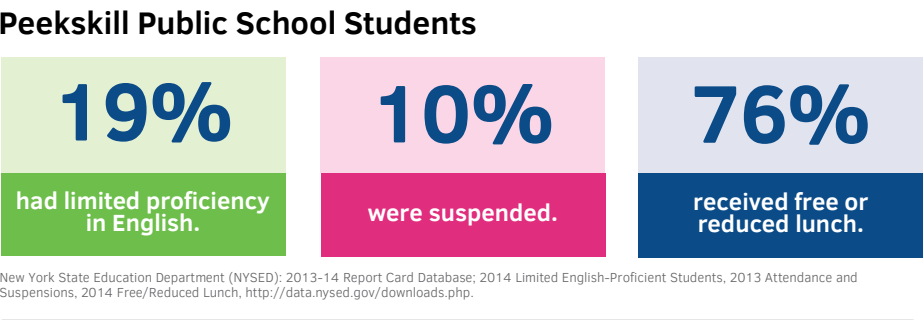
YouthBuild Program

This initiative helps young people ages 16-24 earn their GED, develop construction skills, and enhance their employability while building homes for low-income families.

Of the 20 youth participating in the program, 12 obtained jobs, 6 received their GED, and 5 completed their National Center for Construction Education and Research certificate.

Source: Westchester County Department of Social Services. For more info: <http://westchesterputnamonestop.com/youth/youthbuild>.

EDUCATION



Academic Proficiency Rates*

Subject-Grade	2014	2015	Trend
Math-3rd	28%	27%	↓
Math-8th	27%	23%	↓
ELA-3rd	18%	16%	↓
ELA-8th	15%	16%	↑

*Percent of students at levels 3 or 4 on English Language Arts & Math exams.

NOTE: As of 2014, 8th grade advanced math students can opt out of the 8th Grade Math exam and take the High School Regents exam instead.

NYSED: 2014-2015 Grades 3-8 English Language Arts and Mathematics District and Building Aggregates, <http://www.p12.nysed.gov/irs/pressRelease/2015800/home.html>.

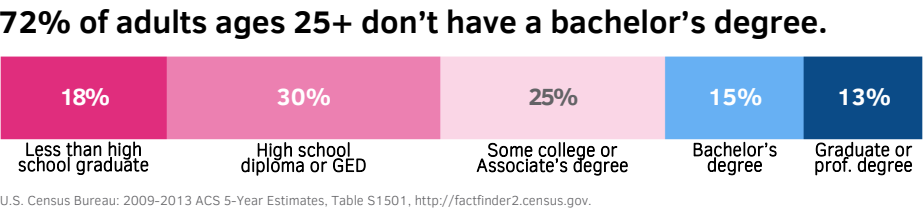
67% of students graduate from high school by June of their fourth year.

2014 On-time Graduates: 67%

2014 College-ready Graduates: 33%

Yet only 17% of graduates are ready for college or careers.

NYSED: 2010 Total Cohort 4-Year Outcome; 2014 Graduation Rate and Enrollment Outcomes by Student Subgroup, 2014 English Language Arts & Mathematics Aspirational Performance Measure, <http://www.p12.nysed.gov/irs/pressRelease/20141218/home.html>.



HEALTH

9% of infants were born underweight.

24% of infants had delayed or no prenatal care.

39% of children are obese/overweight.

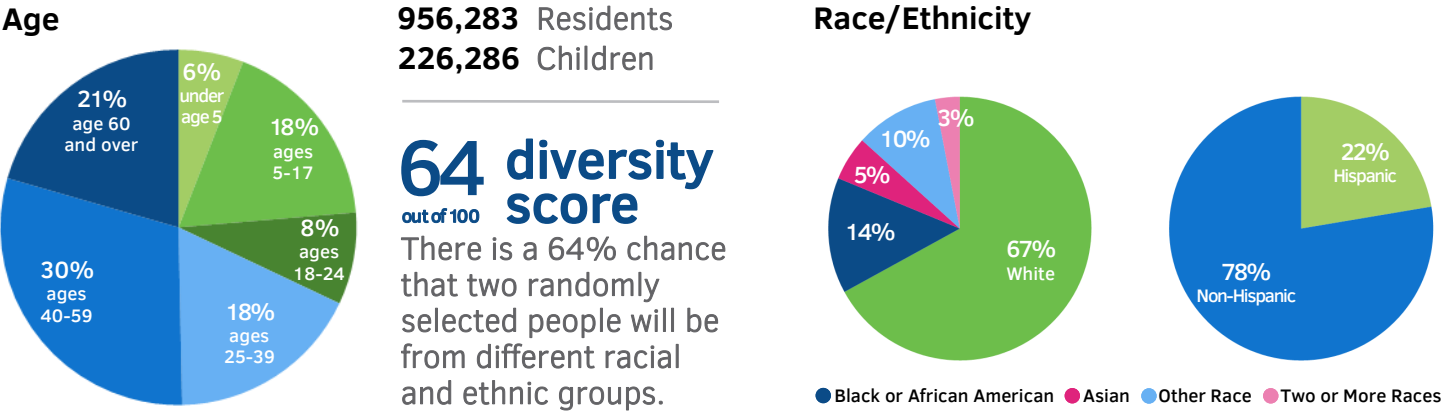
57 walk score
Some errands can be done on foot.

Westchester County Department of Health: 2014-2017 Community Health Assessment and Improvement Plan, Birth Data: 2008-2010 Annual Average, Weight Data: 2008-2010 Combined, http://health.westchestergov.com/images/stories/Data-Stats/Community_Health_Assessment2014-17.pdf. WalkScore® analyzes pedestrian friendliness and distance to amenities: <https://www.walkscore.com/NY/Peekskill>.

CREDITS: Major support provided by Westchester Community Foundation and The John P. and Constance A. Curran Charitable Foundation. Project leader: Anna Wright. Supervisor: Limarie Cabrera. Data Collection: Joanna Ezratty.

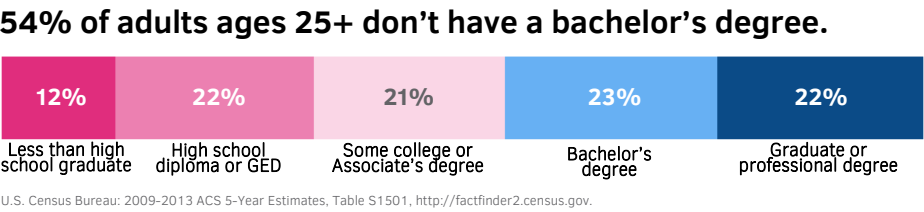
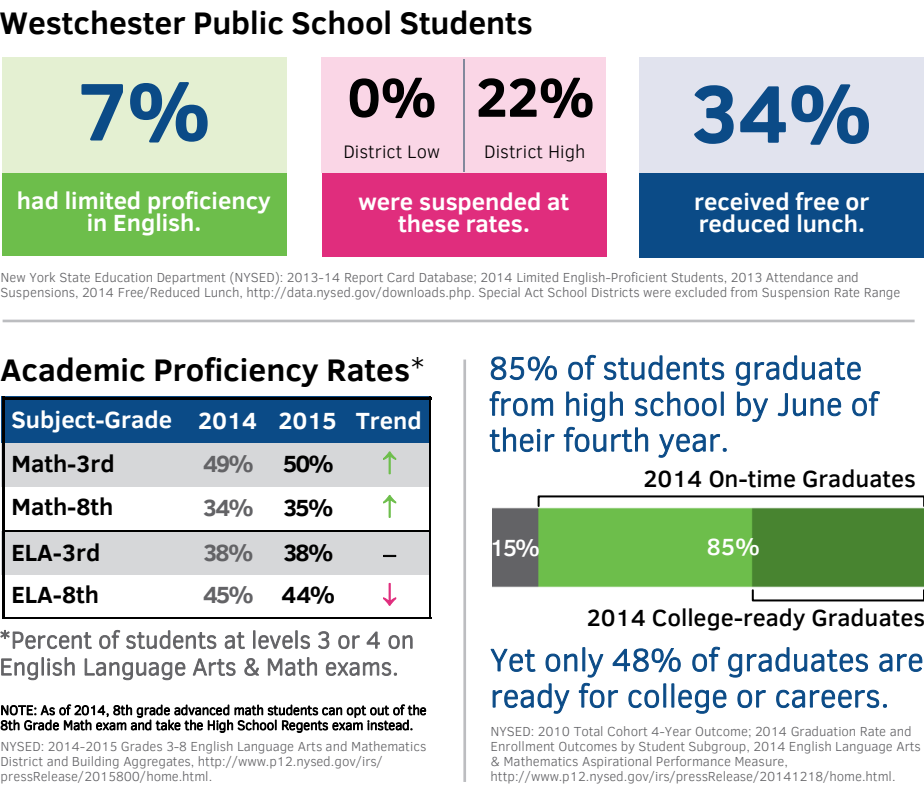
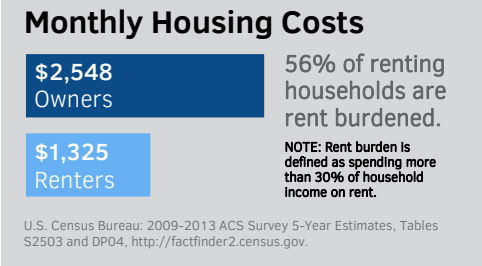
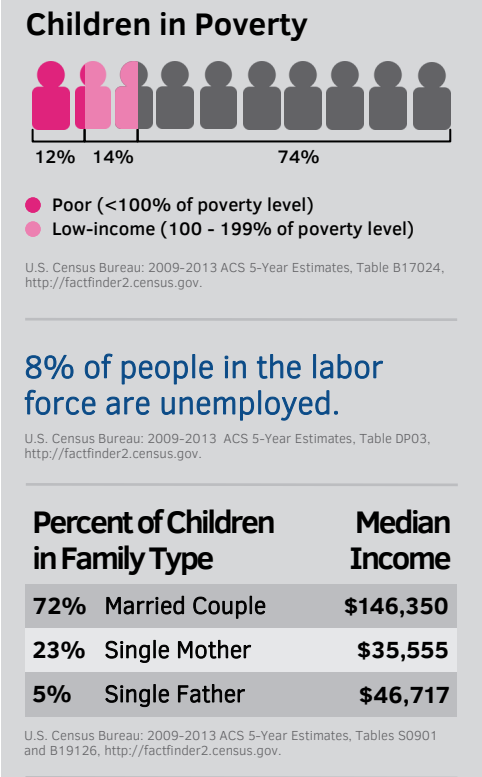
WESTCHESTER

DEMOGRAPHICS



U.S. Census Bureau: 2009-2013 American Community Survey (ACS) 5-Year Estimates, Age: Table B01001; Diversity calculated based on: Table B03002; Race/Ethnicity: Table DP05; <http://factfinder2.census.gov>.

ECONOMICS EDUCATION



GPS4Kids
GATHERING POLICY SOLUTIONS

GPS4Kids is a collective impact initiative involving nonprofits, businesses, and community members. Led by WCA, GPS4Kids aims to make large-scale, lasting changes for Westchester children by unifying the efforts of its partners.

GPS4Kids is working to identify the most pressing issues facing Westchester's youth and to develop a common agenda that will be supported by data-driven metrics.

Westchester Children's Association. www.wca4kids.org/gps4kids

